

MICROZONAZIONE SISMICA

Carta di microzonazione sismica

FA SA 0.4-0.8 s 1/2
scala 1:5.000


Regione Emilia-Romagna
Comune di Montecchio Emilia




Regione	Soggetto realizzatore	Data
Emilia-Romagna	 ENGEO s.r.l. DIRETTORE TECNICO Dr. Geol. Carlo Caleffi Dr. Geol. Francesco Cerutti Dr. Geol. Matteo Baisi Dr.ssa Olga Brontesi Dr. Geol. Alessandro Ferrari Dr.ssa Geol. Melinda Raimondo	Aprile 2025

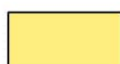
MS3


Legenda


 Confine comunale

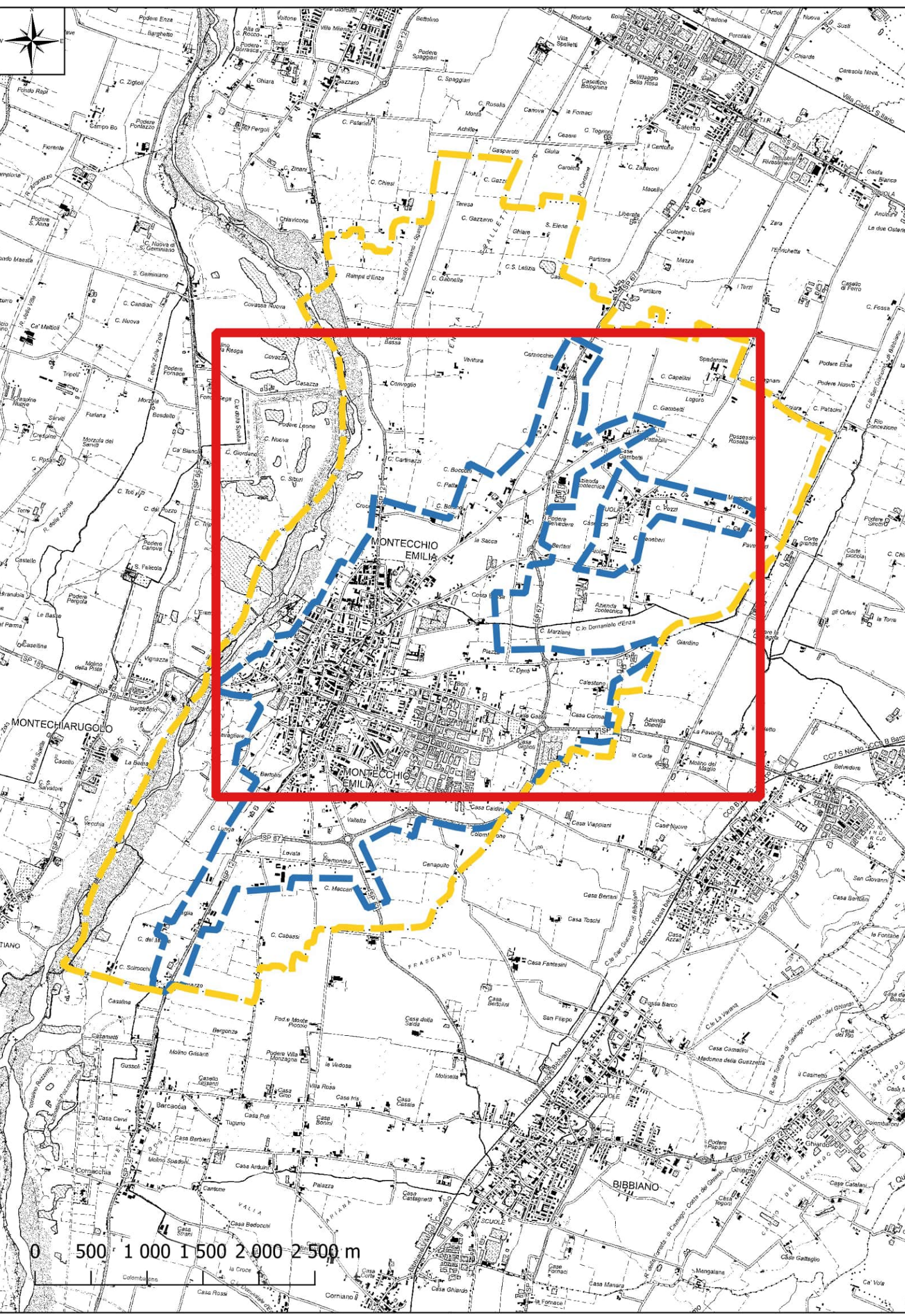
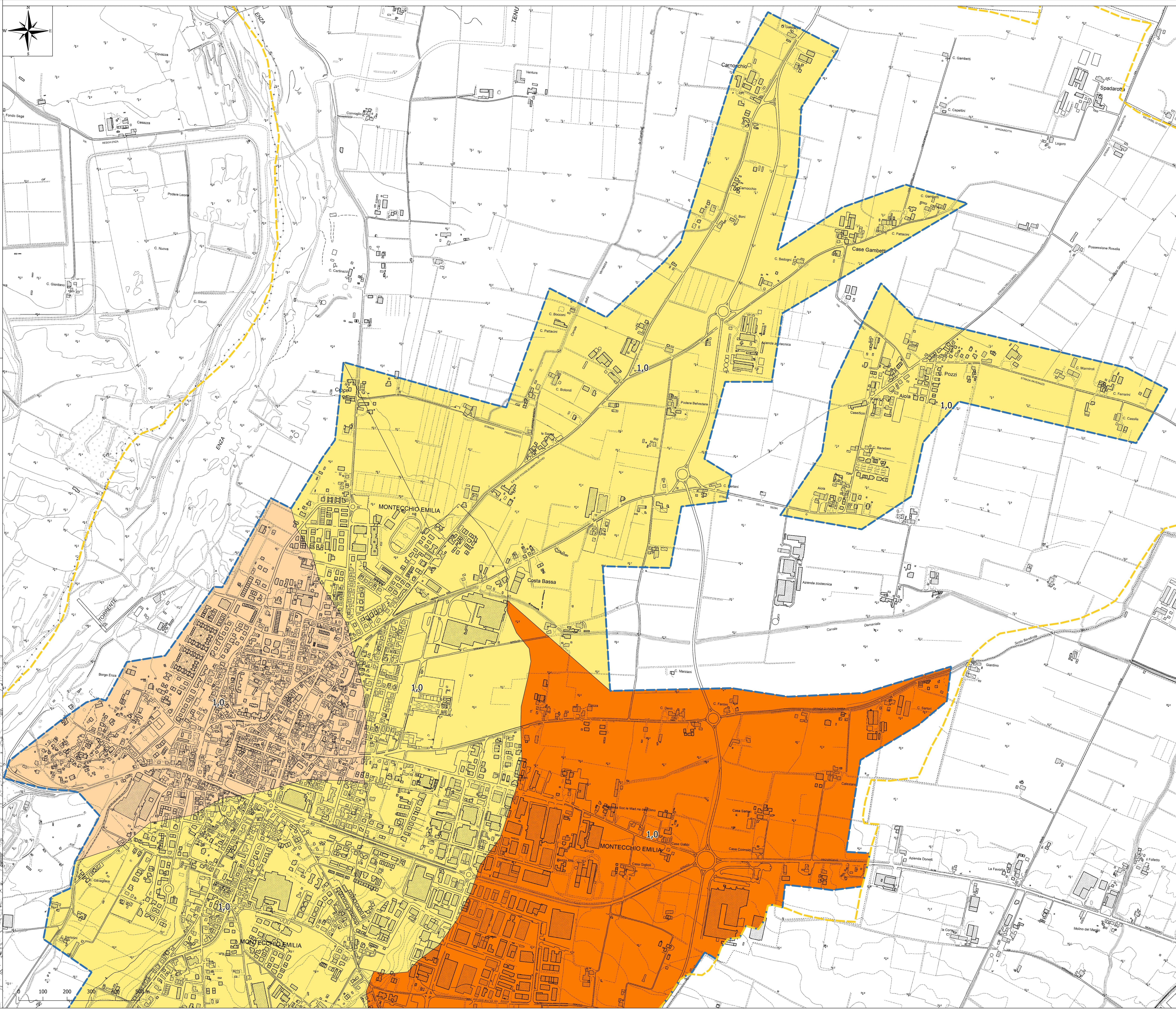
 Aree oggetto di Microzonazione Sismica

Zone stabili suscettibili di amplificazioni locali

 FA-SA 0.4-0.8 s = 1.3 - 1.4

 FA-SA 0.4-0.8 s = 1.5 - 1.6

 FA-SA 0.4-0.8 s = 1.7 - 1.8



MICROZONAZIONE SISMICA


Carta di microzonazione sismica

FA SA 0.4-0.8 s 2/2

scala 1:5.000


Regione Emilia-Romagna

Comune di Montecchio Emilia



Regione
Emilia-Romagna

Soggetto realizzatore


INGEO S.p.A.
www.ingeo.it

Direttori tecnici:


Dr. Geol. Carlo Caleffi
Dr. Geol. Francesco Cerutti
Dr. Geol. Matteo Baisi
Dr.ssa Olga Brontesi
Dr. Geol. Alessandro Ferrari
Dr.ssa Geol. Melinda Raimondo


Data

Aprile 2025


MS3


Legenda


 Confine comunale

 Aree oggetto di Microzonazione Sismica

Zone stabili suscettibili di amplificazioni locali

 FA-SA 0.4-0.8 s = 1.3 - 1.4

 FA-SA 0.4-0.8 s = 1.5 - 1.6

 FA-SA 0.4-0.8 s = 1.7 - 1.8

